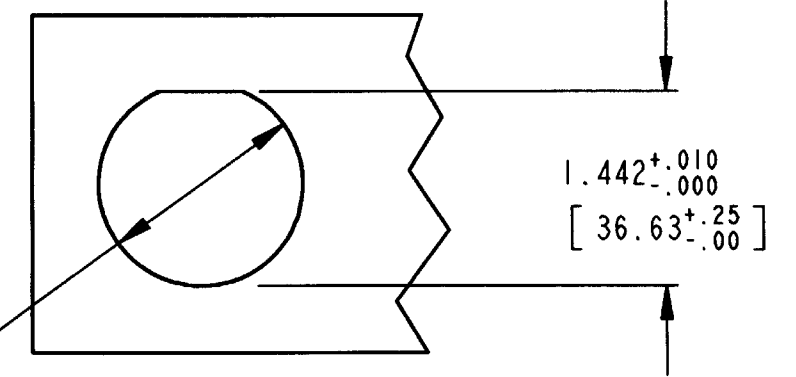
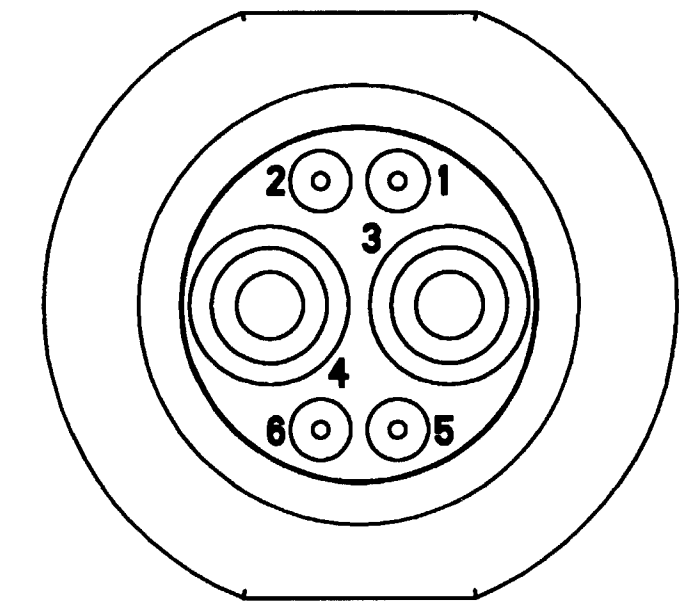
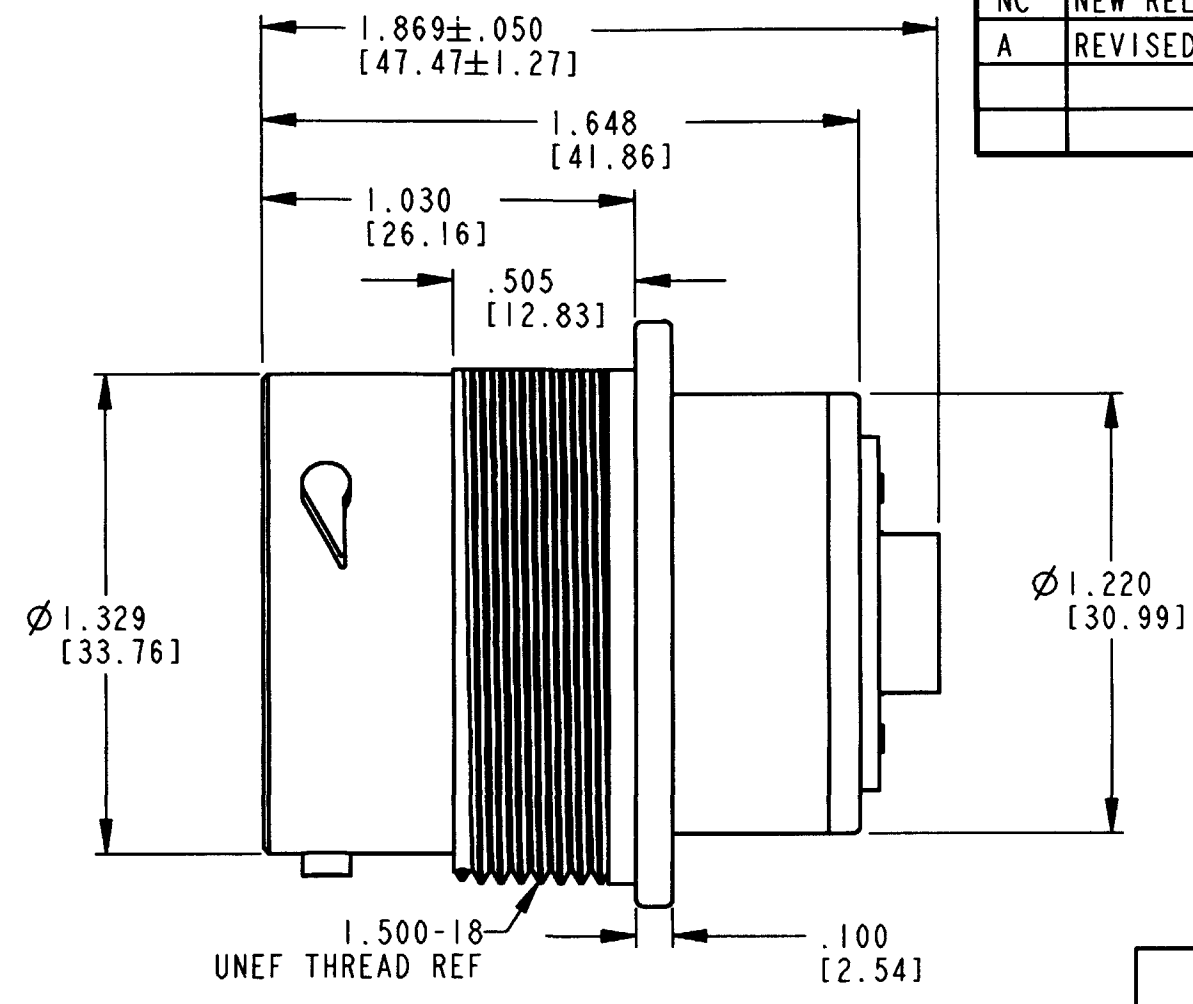
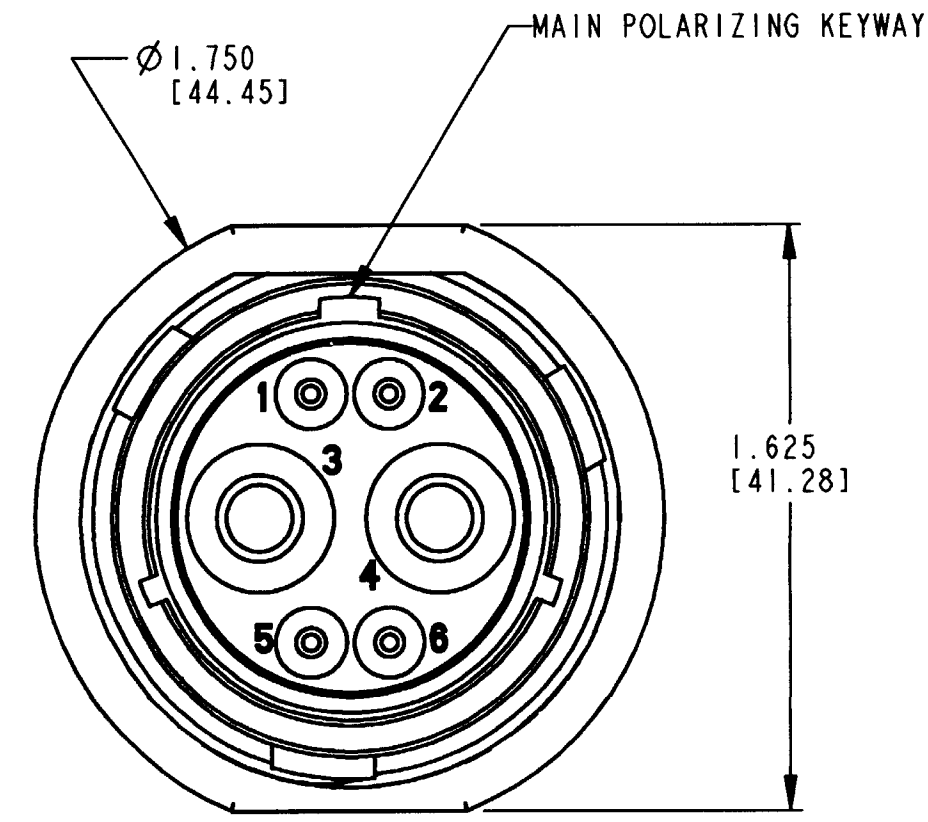


REV A	HDP24-18-6P *	REVISIONS		
SYM	DESCRIPTION	DATE	APPROVED	
NC	NEW RELEASE PER E.O. P17330	8/2/01	R.D.R.	
A	REVISED PER E.O. P17424	2-1-02	RDR	



- 6. THIS PART MATES WITH HDP26-18-6S*-****. (****= ALL MODIFICATIONS, *= TYPE OF SEAL.)
- 5. FOR CONTACT AND WIRE PERFORMANCE AND APPLICATION CHARACTERISTICS SEE ENVELOPE DWG. 0425-015-0000 AND 0425-021-0000.
- 4. DIMENSIONS ARE IN INCHES [MILLIMETERS].
- 3. RECOMMENDED PANEL THICKNESS: .062[1.58] TO .187[4.76].
- 2. THIS CONNECTOR WILL ACCOMMODATE THE FOLLOWING WIRE INSULATION DIAMETERS.

- 8. WHEN * = N: NORMAL SEAL
WHEN * = E: REDUCED DIAMETER SEAL.
- 7. DIMENSION TOLERANCES ARE ±.025[±.63] UNLESS OTHERWISE NOTED.

8 SEAL TYPE	CONTACT SIZE	MIN INSULATION O.D.	MAX INSULATION O.D.	5 WIRE GAUGE AWG [mm ²] RANGE
N	16	.100 [2.54]	.135 [3.40]	14-20 [2.0-0.5mm ²]
E	16	.053 [1.35]	.120 [3.05]	14-20 [2.0-0.5mm ²]
N OR E	4	.261 [6.63]	.292 [7.42]	6 [13mm ²]

1. THIS RECEPTACLE TO BE USED WITH 114020-90 (ALUMINUM) OR 2411-002-1805 (PLASTIC) PANEL NUT AND 2414-002-1800 LOCKWASHER.

NOTES:

SIGNATURE & DATE	
DR	X. SANCHEZ 27JUNE01
CHK	<i>[Signature]</i> 1/31/02
PE	<i>[Signature]</i> 1/31/02
APPD	<i>[Signature]</i> 1-31-02
SCALE	NONE WT

RECEPTACLE CONNECTOR
18-6 ARRANGEMENT
HDP20 SERIES

ENVELOPE

CP	MATL. CODE
The Deutch Company DEUTSCH I.P.D. 3850 INDUSTRIAL AVE. HEMET, CALIF. 92545	
B	HDP24-18-6P *
DWG SIZE	CODE 11139 SHEET OF